

Marine Industry & META-LAX[®]



Deflector Vane

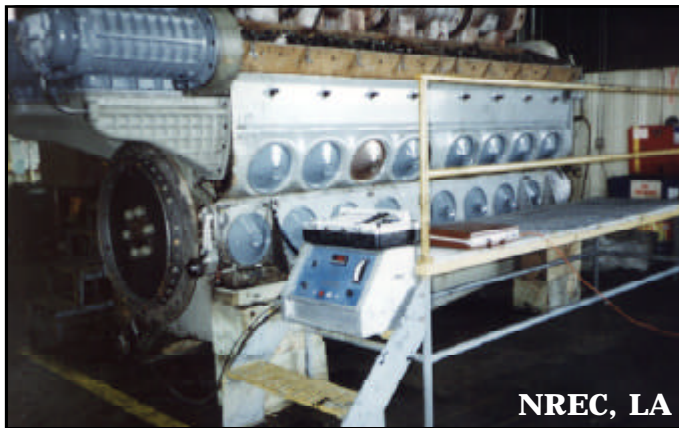
Meta-Lax Stress Relief applied to resist welds from cracking in service.

Anchor Chain Drum

Meta-Lax Stress during welding: T-1 drum to reduce preheat temperature yet still maintain high quality welds.



STRESS RELIEF & WELD CONDITIONING



16-Cylinder Diesel Marine Engine

Meta-Lax stress relief applied during engine rebuild to combat premature fatigue, thereby extending engine service life.



78-ft Work Boat

Meta-Lax is applied during welding to the aluminum structure and the hull to nearly eliminate weld distortion.

Note the near ripple free finished hull.